

Quick Start Guide

Install the software, Smart Label Creator, as follows before connecting the SMART LABEL PRINTER to your computer.

HOST ENVIRONMENTS

- Microsoft® Microsoft® Windows Vista® (32bit / 64bit)® Windows Vista® (32bit / 64bit)
- Microsoft® Windows® 7 (32bit / 64bit)® Microsoft® Windows 7 (32bit / 64bit)
- Microsoft® Microsoft® Windows® 8 (32bit / 64bit)® Windows 8 (32bit / 64bit)
- Microsoft® Windows® 8.1 (32bit / 64bit)®
- Microsoft® Microsoft® Windows® 10 (32bit / 64bit) Windows 8.1 (32bit / 64bit)
- Mac OS® Mac OS® X 10.6 (32bit / 64bit)® X 10.5.8 (32bit / 64bit Intel CPU only)
- Mac OS® OS X® 10.7 (32bit / 64bit)
- Mac OS® OS X® 10.8 (64bit)
- OS X® 10.9 (64bit)®
- Mac OS® OS X® 10.10 (64bit)
- Mac OS® OS X® 10.11 (64bit)®
- Mac OS® OS X® 10.12 (64bit)®

Hereinafter, host environments noted above are abbreviated as "Windows" or "Mac OS".

INSTALLING THE SMART LABEL CREATOR FOR Mac OS

1. Visit <https://siibusinessproducts.com/support/software-driver-downloads/> Click the Download button for the NEW Smart Label Creator Software for MAC
2. Double-click the printer.pkg file
3. Follow the on-screen instructions

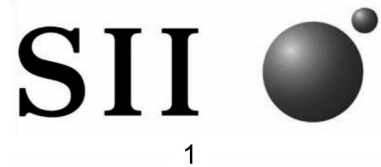
INSTALLING THE SMART LABEL CREATOR FOR Windows

1. Visit <https://siibusinessproducts.com/support/software-driver-downloads/> Click the Download button for the NEW Smart Label Creator Software for WINDOWS.
2. Double-click Setup64.Exe for 64 bit file.

©2013-2014 Seiko Instruments Inc. All rights reserved. Specifications subject to change without notice.

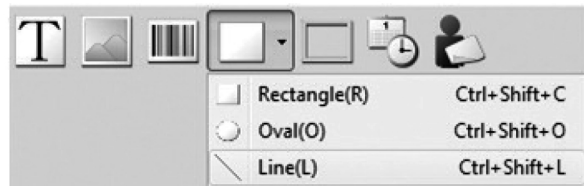
"SII" is a registered trademark of Seiko Instruments Inc. "SMART LABEL PRINTER®" is a registered trademark and "SmartLabels™" is a trademark of Seiko Instruments USA Inc. Other brand and product

names are trademarks or registered trademarks of their respective holders. Part number: 20-60194-04



LABEL OBJECTS FOR Mac OS AND Windows

Object buttons (as shown below) are used to add various elements to your label. Options include text, images, bar codes, drawings, frames, Date/Time, and return address.



To use the object buttons:

- Click one of the object buttons, then position the pointer at the desired location on the label. Left click and hold the mouse to draw the object box on the label.

To open the Properties dialog box:

- Select an object and right click the mouse to open the object's shortcut menu. Then choose Properties to open the selected object's property dialog box.

To move the objects:

- Select an object, confirm that the pointer is a "movement pointer", and then drag the object.

To resize the objects:

- Select an object, move the mouse on the lower right of selected object and confirm that the pointer is a "change-size pointer". Then drag the object and change the size.

To change the default properties of any objects, go to Object menu and select Default Settings of Properties.

HOW TO'S

Create a New Label. Click To change the format, click .

Save Labels. Click In the Save As dialog box, specify the desired destination. Enter a file name, and then click Save.

Batch Print Saved Labels. Click In the Open dialog box, select the saved labels you want to print and select the check box Print Selected File. Then click Open.

Open a Saved Label. Click and select the label that you want to open. The label may be edited and printed.

Importing Data as Database of Smart Label Creator (Windows only). In Microsoft Office applications (Word, Excel, the address book of Outlook, and Access), select the data you want to

import and select Add-Ins tab. Then click Import DB to Smart Label Creator icon .

Copying Text (Windows only). In other programs, select the text data you want to copy and click Copy Text to Smart Label Creator icon in the notification area of the Windows Taskbar.

Abbreviations used in this document are as follows.

- SMART LABEL PRINTER® → SLP
- SmartLabels™ → SmartLabels

Preparing the SLP

1. Install the Smart Label Creator, then connect the printer to your PC or Mac.

- The SLP can be connected to either the Serial or USB port on your PC. Do not use both cables. On your Mac use the USB port.
- Connect the other end of the cable into the appropriate port on the back of the SLP.

2. Connect the supplied AC adapter to the back of the and to a power outlet.

3. The printer powers on automatically when connected to AC power. The Status Light will flash until the labels are loaded.

4. Lift the Roll Cover.

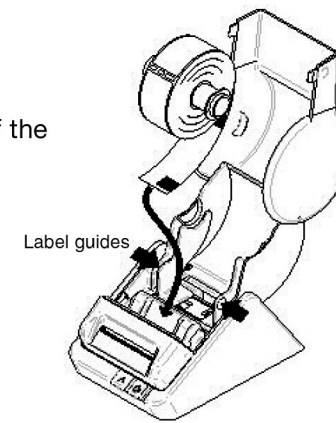
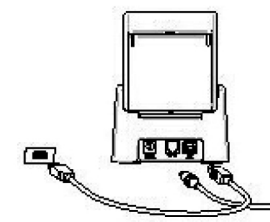
5. Inserting a roll of Smart labels.

- Remove the sticker from the roll, and then place the roll on the spindle as illustrated. Adjust the label guides to fit against the roll.

- Feed the labels into the paper inlet slot. The labels will then automatically be moved into the correct position.

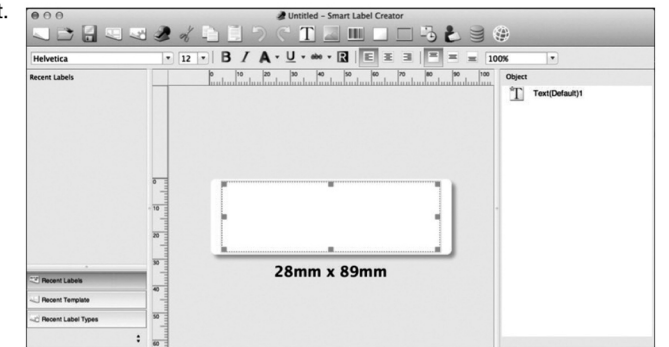
- Close the Roll Cover.

6. Start your SLP software and begin using your new SLP.



YOUR FIRST ADDRESS LABEL (Mac OS)

1. Click the Seiko Instruments Inc. folder and open the Smart Label Creator.app in the left pane of a new Finder window.
2. The default address label will appear (as shown below). Position the cursor where you would like to input text.



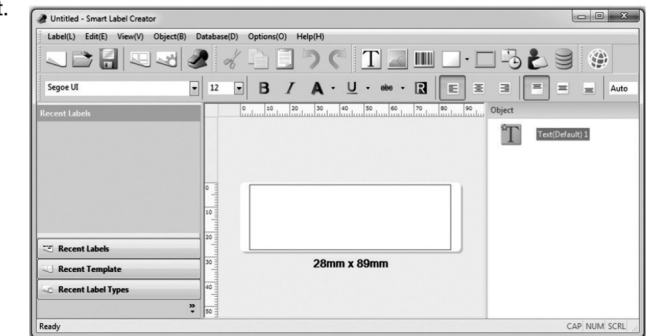
- Edit the font or text
- To add a barcode, select .

3. Click to print the label.

4. Click to save the label.

YOUR FIRST ADDRESS LABEL (Windows)

1. Double-click the Smart Label Creator Icon on your desktop.
2. The default address label will appear (as shown below). Position the cursor where you would like to input text.



- Edit the font or text
- To add a barcode, select .

3. Click to print the label.

4. Click to save the label.

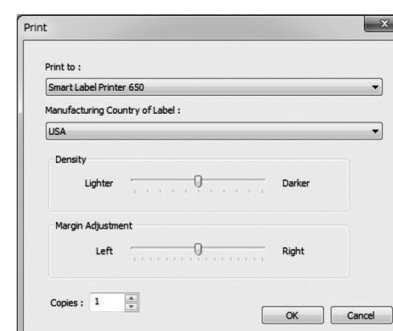
CHANGING LABELS

- Tear off any printed labels so the labels are flush with the exit slot. Press and hold the button to reverse the labels out the paper inlet slot. DO NOT pull the labels out of the printer. Load the new roll as described at the beginning of this guide.

- To select a different label type in the Smart Label Creator, click . Select the label type from the pull-down list on the Label Settings dialog (as shown below).



- The print margins can be adjusted if the printing isn't positioned properly when the label is printed, particularly on small labels. To adjust the margins, click . Move the Margin Adjustment slider on the Print dialog (as shown below).



ABOUT YOUR LABELS

- The SLP 620, 650, and 650SE can use any of the SmartLabels provided by Seiko Instruments Inc.

- SmartLabels are available from your local Seiko Instruments dealer or they may be ordered from Seiko Instruments at <http://siibusinessproducts.com/>.

Important: For best results we recommend the use SmartLabels of Seiko Instruments Inc. Other brands may not work correctly with your SLP, or they may damage the printer and void your warranty.

WHAT TO DO IF...

Refer to your SMART LABEL PRINTER User's Guide or the online help if you have a problem or need additional information when using your SLP.

To access online help, choose *Smart Label Creator Help* from the *Help* menu.